

Community Options Community Options Community Options Community Options Community Options Community Options

# CHOICES

Community Options, Inc.

Supporting People with Disabilities Since 1989.

Winter 2004



**HAPPY 10<sup>TH</sup> TO  
COMMUNITY  
OPTIONS OF  
PITTSBURGH!**



*Ray, a man who moved from the Western Developmental Center, addresses the guests at the 10th Anniversary Gala.*



December 1, 2004

To All Community Options Employees,

The holiday season is a time for friends and family, for thinking about the past year and making plans for the future. As the President of Community Options I'd like to personally thank all of you for making room in your lives for the people we support. You are the only family for many of them and they are blessed to have you.

Our programs and services are only as good as your hearts and you have proved over and over again that you care deeply. I am thankful to have people like you to work with now, in 2005, and beyond.

Happy Holidays to you and to your families,

Robert P. Stack

---

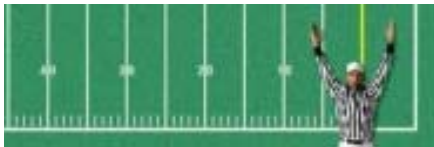
**Need to send holiday flowers? We deliver anywhere in the US!  
Call 1.877.vaseful or visit us on the web at [www.vaseful.com](http://www.vaseful.com)**

---

## FREE MONEY!

December is open enrollment month for the Community Options 403(b) retirement plan. You should really take advantage of this employment benefit. We all find it hard to save - there is always something to spend that paycheck on. But if you do not enroll in the plan, you are really throwing money away. If you join, Community Options will match 100% of your contribution up to 4% of your annual salary. Check out the box on the back and see how much you can have in ten years for your \$5 - \$50 dollar a week payroll deduction. It helps on your taxes too! Ask about forms at your local office or call Lisa McRae in Princeton at 609-951-9900 to enroll today. Just think about how quickly the last ten years went by!





# First and Ten at Heinz Field

On November 12<sup>th</sup> more than 100 fans gathered at Heinz Field in Pittsburgh but it was not for football.

FIRST they gathered to honor Andrea Geraghty, a Pittsburgh attorney who has been a long time friend of Community Options. Andrea's family, friends, and colleagues looked on proudly as she was recognized for her defense of people with disabilities and their right to a place in the community.

TEN is for ten years of Community Options' service in Pittsburgh. Board members Robert Stack, Marge Brown, Derek Wright, and Clarence York congratulated Bridget Haney and her hard working and loyal staff for creating stable homes and real jobs for people with disabilities. The most touching tribute was from Ray, a man who moved from the Western Developmental Center, who now has a valued place in the Pittsburgh community.



If you join, Community Options will match 100% of your contribution up to 4% of your annual salary.

Your Money Per Week	Community Options Match Per Week	Total Per Week	Total Per Year	Total of Deposits in Ten Years*
5	5	10	520	5,200
10	10	20	1,040	10,400
20	20	40	2,080	20,800
30	30	60	3,120	31,200
40	40	80	4,160	41,600
50	50	100	5,200	52,000

\*Total of deposits are examples only of your contributions and match. Actual value of your account in one through ten years may be more or less depending on the Legg Mason investments you choose.

## Building Blocks

Vacations - family parties - holiday and merit bonuses - new furniture and carpets - tuition reimbursement - all things we want for the people we support and for our employees. Contract and grant funds do not always cover these kinds of expenses and so we host many fund raising events. And we also ask those who see the need every day to participate in Building Blocks, our employee donation program. If everyone gave a dollar or two per pay it would really add up. If you can, please sign up for a payroll deduction - it's tax deductible too.

Thank you to the following people who already donate.

Megan Adams ~ Andrea Bonaparte ~ Nicole Buckley ~ Jill Camiolo ~ Dorothy Carter ~ Joan Conklin  
 Michael Crow ~ Frances Curley ~ Josephina Difulvio ~ Sheldon Dobbs ~ Bridget Lee Haney  
 Gary Harden ~ Wanda Harding ~ Karen Hensley ~ Charles Hurlburt ~ Laura Lee ~ Madeline Marchena  
 Joycelyn Martinez ~ Carla O'Brien ~ Carter Patterson ~ Maureen Puglise ~ Mario Saenz  
 Kathryn Sampson ~ Jessie Shaw ~ Robert P. Stack ~ Jerneau Sullivan ~ Theresa Tarantino  
 Elizabeth Taylor ~ Abiemwense Q. Uwaifo ~ Jerome Williams