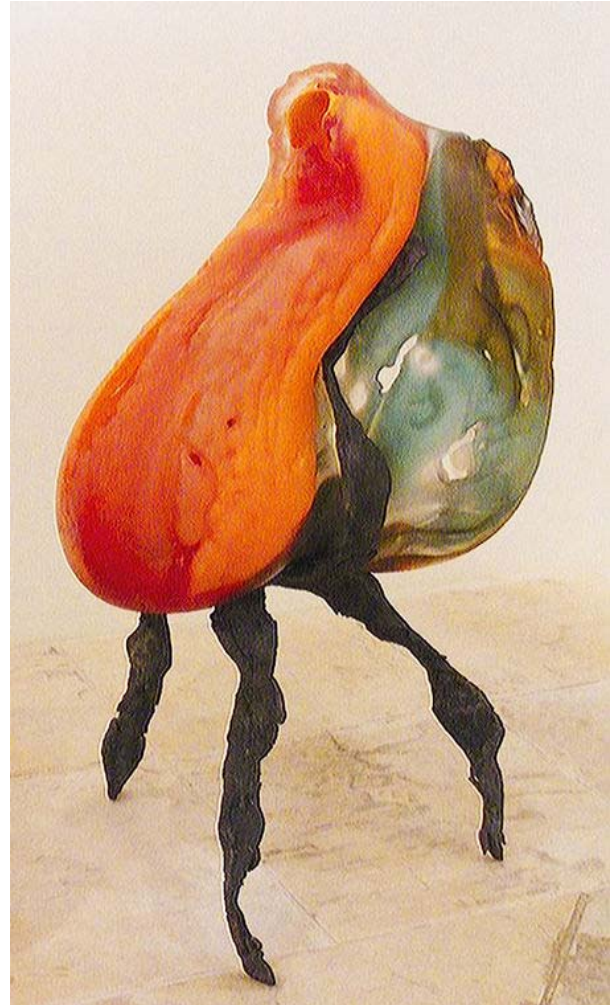


Patrick Morrissey's human heart-like sculptures at William and Joseph

Michael Abatemarco | Posted: Friday, November 27, 2015 5:00 am

William and Joseph Gallery, 727 Canyon Road,
505-982-9404

Patrick Morrissey's human heart-like blown glass and steel sculptures from his *Fire & Ice Series* are on display in the exhibition *Heart Wide Open*. "The sculptural element is often compared to the heart," he writes. "I see that visually, but what I experience in the creation of each of these pieces is also very similar to the heart — there is a vulnerability to the glass, and as bark protects a tree, the steel structure protects the glass." Sales of Morrissey's work benefit Community Options, Inc. to support people with disabilities. The show opens Friday, Nov. 27 with a reception on Friday, Dec. 4, at 5 p.m.



Fire & Ice

Patrick Morrissey: Fire & Ice, 2015,
blown glass and steel